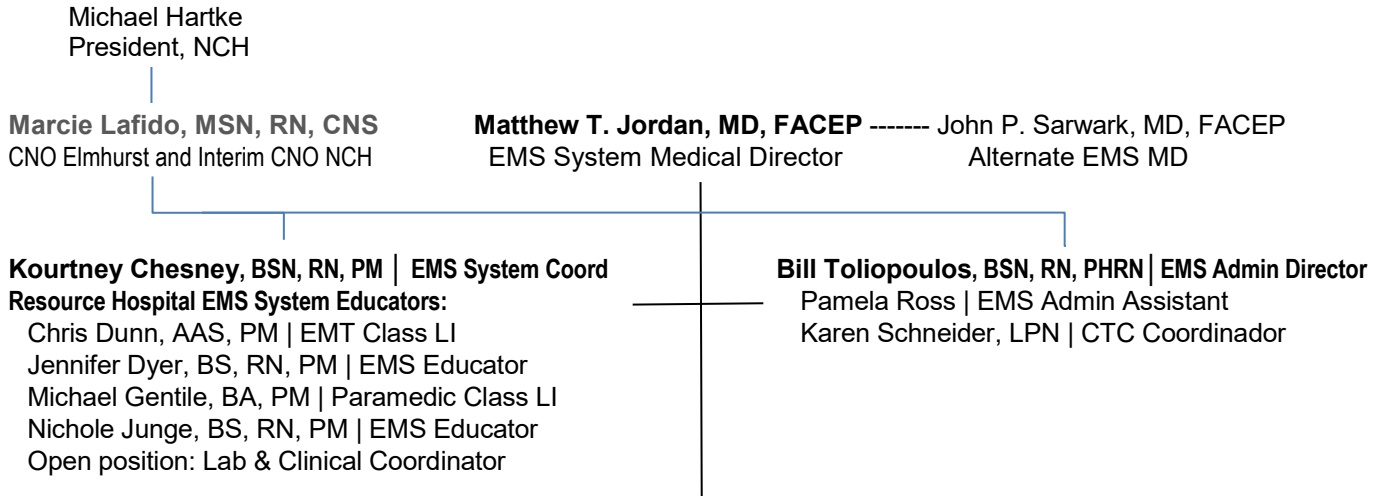


Northwest Community EMS System/CTC Organizational Chart: 7-22-24



EMS Provider Agency Hospital Assignments

Alexian Brothers	Good Shepherd	Glen Oaks	NCH ED	NWC EMSS	Resurrection	St. Alexius
John Larsen	Karolina Lyp		Noreen Unti Colin Finlay	J. Dyer/N. Junge - Prospect Heights	Virginia Logan Cindy Brennan	Karin Buchanan
- Bloomingdale - Elk Grove Village - Itasca - Wood Dale	- A-Tec - Barrington - BCFPD - Lake Zurich - Long Grove - Wauconda		- Arlington Heights - Buffalo Grove - Palatine - Inverness FPD - Rolling Meadows	K. Chesney - Superior - Mount Prospect - Lincolnshire RW	- Advantage/Elite	- Hoffman Estates - Schaumburg

NCH EMS & CTC contact information:

EMS MD	Matt Jordan	mjordan@nch.org	Cell: (847) 962-6008
EMS Administrative Director	Bill Toliopoulos	vtoliopoulos@nch.org	#4485
EMS System Coordinator	Kourtney Chesney	kchesney@nch.org	#4488
EMT Class Lead Instructor	Chris Dunn	cdunn@nch.org	#4492
EMS Educator	Jen Dyer	jdyer@nch.org	#4494
PM Class Lead Instructor	Mike Gentile	mgentile@nch.org	#4490
EMS Educator	Nichole Junge	njunge@nch.org	#4487
PM Class Lab & Clinical Coord			#4486
TNS Course Coord/EMS Educ.	Connie Mattera	cmattera@nch.org	Cell: (847) 493-9974
EMS and CTC Administrative Assistant	Pamela Ross	pross@nch.org	(O): #4482 / Fax 847-618-4489
Community Training Center Coordinator	Karen Schneider	kschneider@nch.org	(O): #7403 / Fax 847-618-7419
NCH ED EMS Coordinators	Noreen Unti Colin Finlay	nunti@nch.org cfinlay@nch.org	#4015 #4023

IDPH Region 9 EMS Coordinator: Danielle Albinger, BSN, RN

Illinois Department of Public Health Division of EMS & Highway Safety
245 West Roosevelt Road, Building 5, West Chicago, IL 60185

Email: Danielle.albinger@illinois.gov

Cell: 630-200-7226

Fax: 630-293-6908

Mon – Thurs 07:30 – 4:30, Fri – 07:30 – 3:00 – alt Friday off