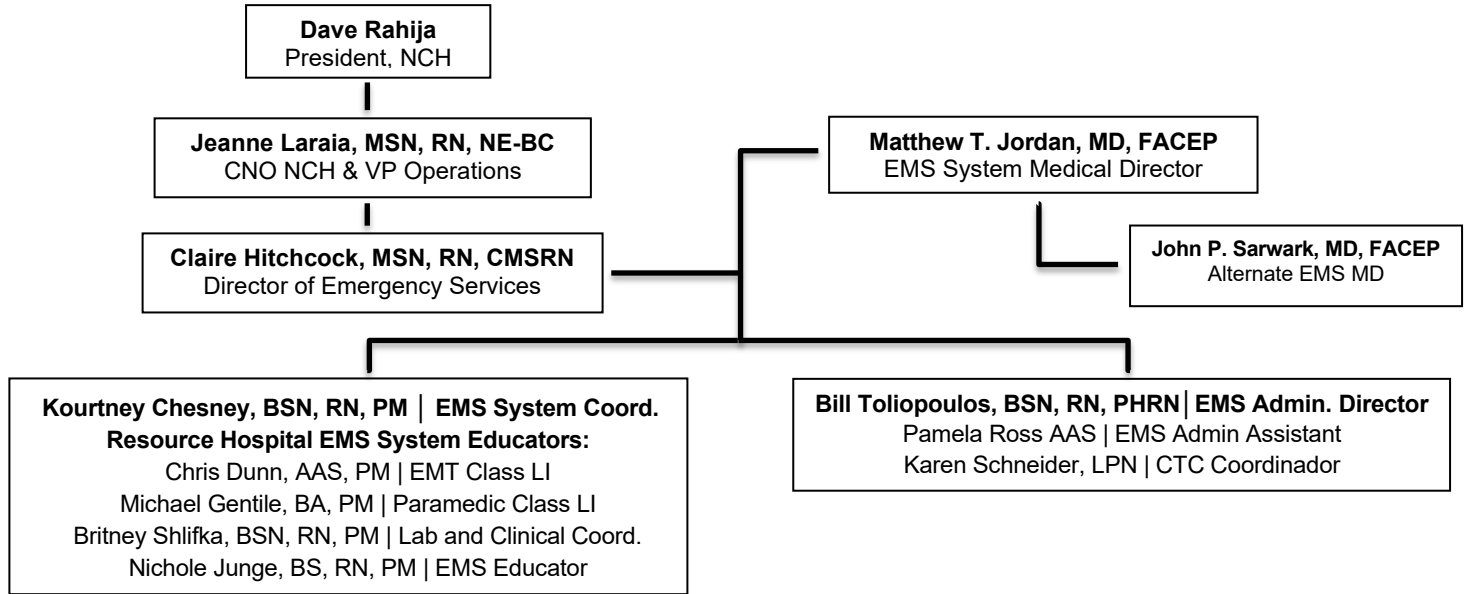


Northwest Community EMS System/CTC Organizational Chart: 4-1-25



EMS Provider Agency Hospital Assignments

| Alexian Brothers | Good Shepherd | Glen Oaks | NCH ED | NWC EMSS | Resurrection | St. Alexius |
|--|---|------------------|--|---|-------------------|-----------------------------------|
| John Larsen | Karolina Lyp | Meaghan Espinoza | Colin Finlay | N. Junge - Prospect Heights | Virginia Logan | Karin Buchanan |
| - Bloomingdale - Elk Grove Village - Itasca - Wood Dale | - A-Tec - Barrington - BCFPD - Lake Zurich - Long Grove - Wauconda | | - Arlington Heights - Buffalo Grove - Palatine - Inverness FPD - Rolling Meadows | K. Chesney - Superior - Mount Prospect - Lincolnshire RW | - Advantage/Elite | - Hoffman Estates - Schaumburg |

NCH EMS & CTC contact information:

| | | | |
|---------------------------------------|------------------|--|-------------------------------|
| EMS MD | Matt Jordan | mjordan@nch.org | Cell: (847) 962-6008 |
| EMS Administrative Director | Bill Toliopoulos | vtoliopoulos@nch.org | #4485 |
| EMS System Coordinator | Kourtney Chesney | kchesney@nch.org | #4488 |
| EMT Class Lead Instructor | Chris Dunn | cdunn@nch.org | #4492 |
| PM Class Lead Instructor | Mike Gentile | mgentile@nch.org | #4490 |
| EMS Educator | Nichole Junge | njunge@nch.org | #4487 |
| PM Class Lab & Clinical Coord | Britney Shlifka | bshlifka1@nch.org | #4486 |
| EMS and CTC Administrative Assistant | Pamela Ross | pross@nch.org | (O): #4482 / Fax 847-618-4489 |
| Community Training Center Coordinator | Karen Schneider | kschneider@nch.org | (O): #7403 / Fax 847-618-7419 |
| NCH ED EMS Coordinators | Colin Finlay | cfinlay@nch.org | #4023 |

IDPH Region 9 EMS Coordinator: Danielle Albinger, BSN, RN

Illinois Department of Public Health Division of EMS & Highway Safety
245 West Roosevelt Road, Building 5, West Chicago, IL 60185

Email: Danielle.albinger@illinois.gov

Cell: 630-200-7226

Fax: 630-293-6908

Mon – Thurs 07:30 – 4:30, Fri – 07:30 – 3:00 – alt Friday off