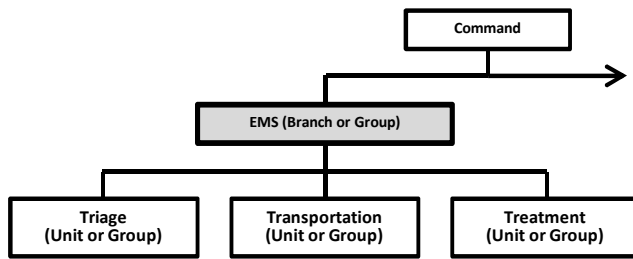


Mass Casualty Incident Operational Checklist
EMS (May be set up as a Group or a Branch)



Location:	
Date:	Box #:
Alarm Time:	Arrival:
Last Pt. Trans:	Cleared:
EMS Leader:	

Checklist Item	✓	Time	Location / Comments / Who
Ensure Resource Hospital Notified			
Ensure Triage initiated			
Assign or request Aide(s)			As needed
Determine Need for Subordinates			(Including Triage, Transportation and/or Treatment)
Assign Triage Unit/Group			
Assign Transportation Unit/Group			
Determine Transport Area			Location:
Assign Treatment Unit/Group			
Determine Treatment Area			Location:
Initial Patient Count			Red: Yellow: Green: Deceased:
Ensure Hospital Updated			
Determine Needed # of Ambulances			
Request Ambulances from IC / Ops			
Request Medical Team(s) (for Specific Needs)			
Coordinate Medical Team			
Request any Additional Resources from Command			
Determine Adequacy of Supplies			
Request supplies as needed			
Request MCI Trailer(s) if needed			Number of Trailers Requested:
Supervise all Assigned Personnel			
Keep IC / Ops Updated			
Advise IC when All Patients Transported			
Advise Resource Hospital when All Patients Transported			

Communications - radio freq

To Hospital: ☐ Phone ☐ Radio

By: ☐ IC ☐ EMS Leader ☐ Transportation Ofc.

On Scene: Incident Tactical:

EMS Branch:

Logs Section: